

PSP/TSP Calibration System

(Product ID: CAL-04, CTC-04)

The ISSI calibration system is a multi-function system designed for controlling the mass-flow of two gases and temperature within a cell. This new evolution of ISSI's pressure and temperature sensitive paint calibration system utilizes a gas flow design whereby the nitrogen to oxygen mass flow ratio is controlled to simulate pressure without the noise and complexity of the diaphragm pump.



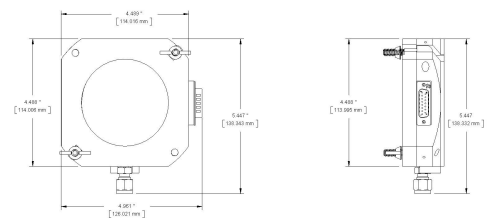
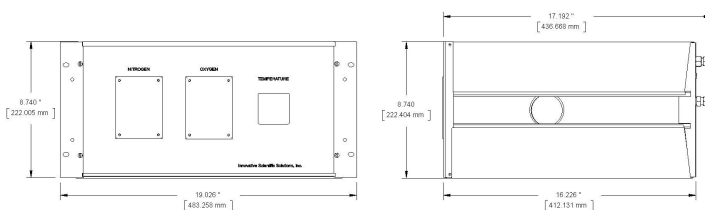
Accurate	Accurately control oxygen and nitrogen concentration	Simulated pressures from 0-4.0 bar
Control	Software control of the system via user interface	Runs through parameters automatically
Networking	Can be connected and simultaneously controlled over a network	10/100 Mbps Ethernet
Versatility	Can be configured to use with a variety of gases	Acts as a trigger source for all calibration hardware



Control Box (CAL-04)



Cell (CTC-04)



SPECIFICATIONS

Power	100-240 V, 50-60Hz
Pressure Range	0.0 - 4.0 bar
Temperature Range	0 - 70 °C
Interface	10/100 Mbps Ethernet
Pressure Accuracy	0.5% of full scale
Temperature Accuracy	0.1 °C
Trigger Input/Output	TTL
Software	PT Control
Warranty	1 year limited
ECCN	EAR99

Innovative Scientific Solutions, Inc.
7610 McEwen Road, Dayton, OH 45459
Phone (937) 630-3012 Fax (937) 630-3015

email: spalluconi@innssi.com
web: www.psp-tsp.com

Any and all underlying information and technology contained in this document may be subject to U.S. export controls, including the Export Administration Act (50 U.S.C. Appx. §§ 2401 et seq.) and the Export Administration Regulations ("EAR", 50 C.F.R. Parts 730-774), and may be subject to export or import regulations in other countries. You are responsible for complying with all trade regulations and laws both foreign and domestic. Except as authorized by law or distributor agreement with ISSI, you agree and warrant not to export or re-export the information to any country, or to any person, entity, or end-user subject to U.S. export controls, including without limitation persons or entities listed on the U.S. Department of Commerce Bureau of Export Administration's Denied Parties List and the U.S. Department of Treasury's Specially Designated Nationals. You further represent and warrant that no U.S. federal agency has suspended, revoked, or denied your export privileges. CANON® is a registered trademark of Canon, Inc.